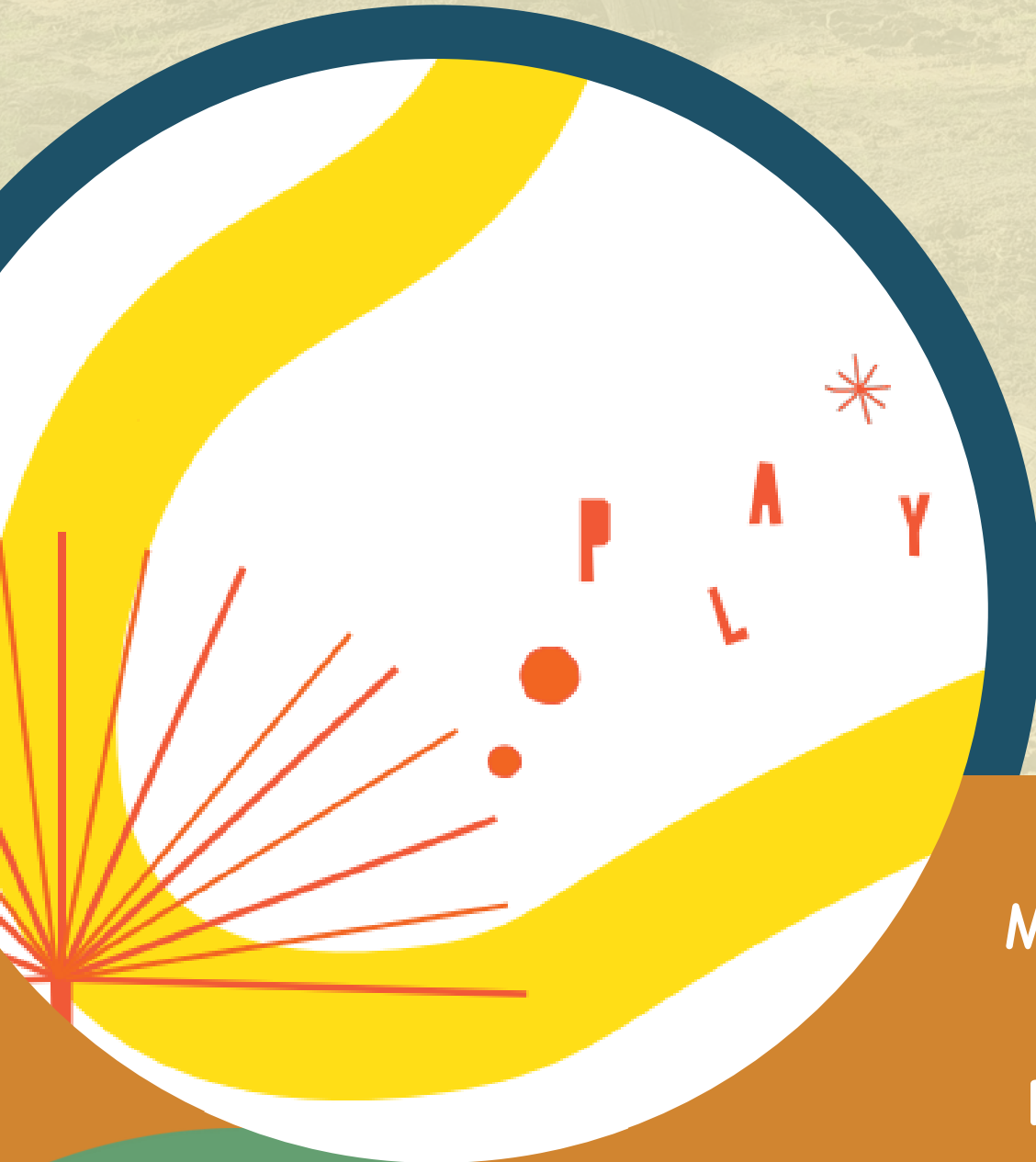


MAPPING LOGAN'S PLAY CULTURE



MAKING LOGAN
THE MOST
PLAYFUL CITY IN
THE WORLD

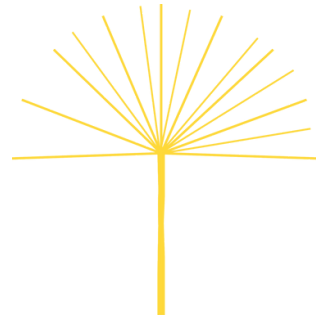
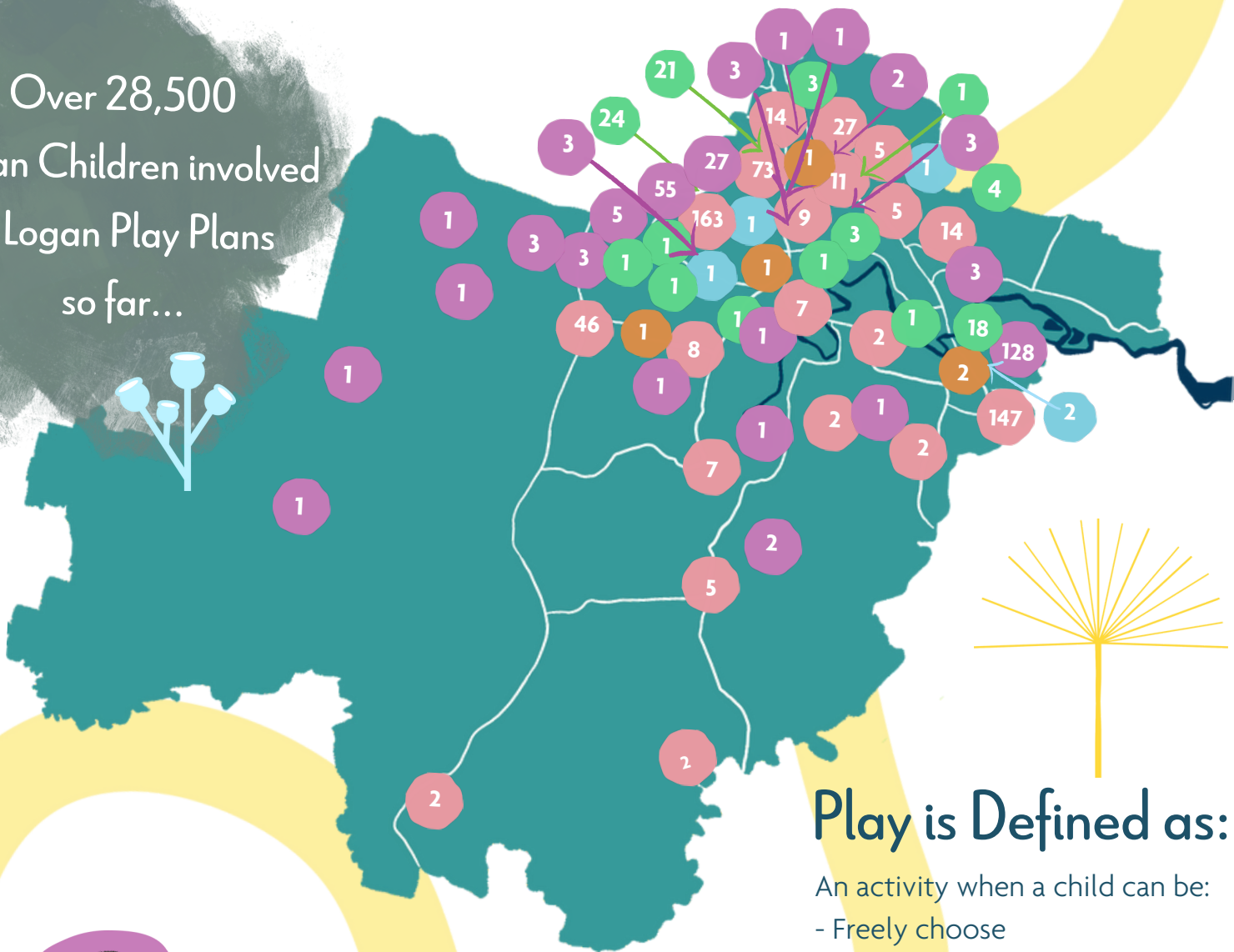
Local Play
Every Day

Our Play Story So Far..
March 2021 to July 2022

Logan's Cultural Map of Play

Over 28,500

Logan Children involved
in Logan Play Plans
so far...



Play is Defined as:

- An activity when a child can be:
- Freely choose
 - Self-Directed
 - Intrinsically motivated
 - Autonomous and independent



Elevating local child-voice - 323 children consulted on their play, to understand local considerations, barriers and solutions



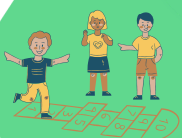
FOUR high quality Loose Parts Play areas created for local children to access and play more often



868 Playworkers trained to provide high quality child led play for the children they support daily



FIVE Neighbourhood play networks established for local children to be able to play every day, where they live



73 Pop-up Play sessions for over 9,300 Logan children, role modelling high quality child-led play provision

CONTENTS

01 Introduction

Our Mission and Vision
Structure and Management
Strategic Approach

03 About AIP

Our History
Our People
Our Supporters

07 Purpose

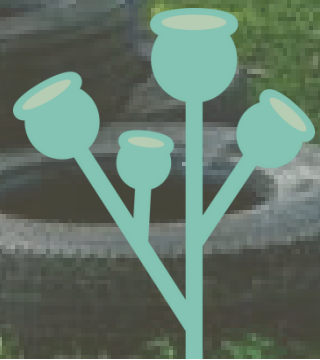
Chairperson's Report
Logan's Play Map
Our Objectives and Activities

30 Finance

Treasurer's Report
Auditor's Statement
Financial Statements

36 Other

Moving Forward
Acknowledgements and Thank You





Who are the Play People?

- We work in support of play for Logan children and families.
- We are actively involved in bringing to life the Logan Play Action Plans
- This is being achieved in many playful ways



Is a not for profit charity that has been leading a city-wide coordinated effort to increase play for Logan children, and in doing so increase joy, happiness, health and social connections.

AIP Vision Local Play, Every Day

AIP Mission We influence opportunities and elevate conditions for children's play and voice where play is not a privilege.



Vision

Our purpose is to promote, enable and protect the right Australian children have to play, especially where they live. We exist to amplify child voice regarding their play, we will advocate for children and their play, and we will influence conditions for children to play.

We operate with three core values; Childism, a playful approach and checking the adult agenda at the door.

Evidence demonstrates that play is many things to children, including an intervention tool for health, wellbeing, efficacy and life satisfaction. Our organisation aims to secure child-led free play to build resilience and wellbeing for and with children, where play is not a privilege.

Mission

Children's opportunities for play are in decline. Children are indicators of a thriving environment and when children start to disappear or are marginalised from spaces that make up everyday life in our society – it is of deep concern. The reasons children are less welcome in our adult-orientated society are diverse and complex, societal and receive interdisciplinary attention reaching into areas such as education, health, psychology, environment, geography, design and sociology. Consequently, serious cardio-metabolic disorders and mental health issues such as depression have been on the rise in adolescence and in early adulthood.

If we are collectively committed to creating a healthier society and a sustainable future for all, we need to accommodate space, time and permission in everything we do to allow children to be involved, this will support them to develop to their full potential.

Structure and Management

Australian Institute of Play is registered with the Australian Charities and Not-for-profits Commission (ACNC) governed by a Board of Directors. The AIP executive board is made up of nine Directors who oversee the organisation and meet monthly. Since AIP currently has a Logan focus, it is appropriate that majority of the Directors are Logan-based to better understand and overcome challenges with local knowledge.

The board heeds knowledge from 25 general members, which are made up of Logan residents and play-related professionals. AIP is also supported by an advisory committee made up of relevant experts working in the play realm, assisting the AIP to grow its capacity to ensure an effective strategic approach.

With a city-wide focus, population scale approach, AIP has an eye on the scalability and transferability. We predict there will be a continued success across Logan, and we believe that this approach could be implemented with similar successes in other locations.

AIP is operationally committed to the 2022 to 2025 Logan Play Action Plans, a co-designed and co-created plan to make 'Logan the Most Playful City in the World'.

Our Strategic Approach

1 Child Voice on Play

Nothing about them, without them. Ensuring children are empowered to help us cater for their play needs. We will support children to share their thoughts and opinions on matters important to them, we will then commit to actioning changes which will allow children to have control over what, when and how they play.

2 Play-based Strategies

Related to the aforementioned actions, play-based strategies is one method of how we are delivering for children on their expressed play needs. Not only creating playful opportunities for children, but also leading by example and creating opportunities for community members to collaborate and role model high quality child-led free play provision for the community.

3 Capacity Building for play

Working together with individuals, groups and organisations to build competence, capability and sustainability for child-led free play within the community. This will ensure long-term positive outcomes for Logan's children and the entire city of Logan.

4 Playful Research

Building an evidence base to demonstrate the need for more child-led free play. Highlighting the impacts for all, as well as growing awareness of the essentialness, value and power of play to transform communities. Play can build community pride and create positive narratives for all involved.



We work in support of Play across Logan and aim to grow good quality child-led play for Logan children and families.

We have completed play professional development provided by Australian Institute of Play in support of Logan children's capacity to play, every day, where they live.

- Aboriginal Torres Strait Islander Community Health Services
- ACCESS Community Services
- AEIOU
- AOTAS
- Ariel Childcare Centre
- Australian Institute of Play
- Beenleigh Family Centre
- Berrinba East State School
- Bethania C&K
- Bethania Early Learning Centre
- Bethania Luthern OSHC
- Browns Plains ECEC
- Burnie Works
- Burrowes State School
- Busy Butterflies
- C&K Eagleby South Community Kindergarten
- C&K Ipswich
- C&K Kingston
- C&K Logan Reserve
- C&K Mt Warren Park
- C&K Rochdale
- C&K Waterford Community Kindergarten
- C&K Windaroo
- C&K Yarrabilba
- Camphill OSHC
- Charlie Place ECEC
- Chatswood Goodstart ECEC
- Chatswood State School
- Children's Centre of Beenleigh
- Cities for Play
- C&K Crestmead
- C&K QLD
- Communities for Children
- Coomera Rivers OSHC
- Cornubia ECEC
- Crestmead Early Education Centre
- Crestmead Play & Learn
- Crestmead State School
- Curious Me
- Dance with Diversity
- Deadly Kindies - Burragah
- Deepening Democracy
- Deru Creche Kindergarten and Family Daycare
- Eagleby Neighbourhood Centre
- Eagleby South State School
- Eagleby State School
- Early Birds Childcare
- Edens Landing Childrens Centre
- Element Photography
- First Five Forever
- Goodstart Chatswood
- Goodstart Crestmead Julie Street
- Goodstart Third Avenue
- Griffith University
- Groves College
- Groves ECEC
- Growing Kind
- Guardian OSHC
- Gunya Meta
- Guppy's ELC
- Imagine Childcare and Kindergarten
- Jindi Mibunn
- Juba Star FDC
- Jump Up for Kids Occupational Therapy
- Kids ELC - Daisy Hill
- Kids ELC - Rochedale
- Kingston East Community Centre
- Kingston Guppy's ECEC
- Kingston KindyLinQ
- Kingston State School
- Kingston Treehouse ELC
- Kiwi Kids
- KU Inclusion Support
- KU Services
- Kyabra Community Association
- Lendlease
- Life Without Barriers
- Little Monkeys
- Logan City Council
- Logan Rivers
- Logan Together
- Logan Village SS
- Loganholme SS
- Loganholme State School
- Mabel Park Early Learning
- Mabel Park State School
- Macarthy Road Education and CC
- Mansfield State School
- Morooka State School
- Marsden Early Learning Centre
- Marsden Kindergarten and CC
- Marsden Primary Community Hub
- Marsden Primary School
- Marshall Road State School
- Matthew Flinders Anglican College
- MJ Designs
- Montessori Gardens Early Childhood Centre
- Multicultural Sports Club
- Mums n' Bubs Logan
- Natural Elements
- Nature Play QLD
- People In Place
- Perfect Beginnings Childcare Centre
- Play & Learn Underwood
- QLEC
- Queensland University of Technology
- Queensland Youth Parliament
- Reclink Australia
- Regents Park OSHC
- Rochedale ECEC
- Rochedale South OHSC
- Rosie's Early Learning Centre
- Salvation Army
- Science Minded
- Shailer Park Goodstart
- Shailer Park State School
- Shout Communications
- Skills to Grow
- Southern Cross University
- Sparrows Early Learning Centre
- Springwood High SS
- Springwood Rd SS
- St Bernardine OSHC
- St Francis Community Hub
- St Paul's Community Hub
- Stacey's Independent Learning
- QLD Gov - Communities
- QLD Gov - Education
- QLD Gov - Health
- QLD Gov - Housing
- QLD Gov - Recreation and Sport
- Studio of Performing Arts
- Sunny Faces ECC
- The Family Place
- Tiny Tots ELC
- Twin Rivers
- Underwood Play & Learn
- Uniting Care
- University of Queensland
- Village Connect
- Warril Yari-Go Karulbo
- Waterford West Education and Care
- Waterford West State School
- We Belong Family Day Care
- Worthy
- Wesley Mission QLD
- Whaiflow
- Woodridge Community Hub
- Woodridge North Community Hub
- Woodridge North Community State School
- Yarrabilba State High School
- YFS
- YMCA
- Yourtown

179
Organization
Members



Our Logan Play Efforts so far...

Child Voice for Play

1. Child Voice Consultation
2. Logan Child Reference Group – Children In Action (CIA)
3. Child Friendly Neighbourhood Workshops
4. Community-wide Child Voice survey
5. Child Voice Keynote Speakers

Logan's Play Action Plan 2022 - 2025
TO MAKE LOGAN THE MOST PLAYFUL CITY IN THE WORLD
WE WILL... **Co-Design with Children/Child's Voice**

9. Logan Children Play Reference Group



Logan's Play Action Plan 2022 - 2025
TO MAKE LOGAN THE MOST PLAYFUL CITY IN THE WORLD
WE WILL... **INCREASE LOOSE PARTS PLAY**

2. More loose parts play everywhere in Logan, all the time



Play-based Strategies

1. Neighbourhood play Networks
2. 10 Weeks of Play programs
3. 2 Days of Play Festivals
4. Under 8's Week Play Events
5. Pop-up Loose Parts Play Sessions
6. Community Backyards – Community Loose Parts Play Area's

Capacity Building for Play

1. Logan Play Action Plans
2. Playworker Training
3. Play & Physical Literacy Training
4. Childhood Summit
5. Bespoke Play Action Plans
6. Playful Schools
7. Outdoor Play Training
8. Embedding Outdoor Learning in Schools

Logan's Play Action Plan 2022 - 2025
TO MAKE LOGAN THE MOST PLAYFUL CITY IN THE WORLD
WE WILL... **INCREASE Play Education**

6. A Logan play-school for grown-ups

PLAY PEOPLE



Logan's Play Action Plan 2022 - 2025
TO MAKE LOGAN THE MOST PLAYFUL CITY IN THE WORLD
WE WILL... **Follow Current Research**

11. Listen to current research and collect more evidence of how to increase play for Logan children

We will be evidence driven and help build evidence on what good quality child-led free play looks like, to help grown-ups understand the value of play for Logan children.



Playful Research

1. Monitoring & Evaluation Plan
2. Social Inclusion through Neighbourhood Play – Griffith University & Queensland University of Technology
3. Logan Play Action Plans Evaluation - University of Queensland
4. 10 Weeks of Play Evaluation - University of Queensland
5. Positive Mental Health for Mothers through Play - Griffith University

Our History

The Australian Institute of Play was established as a result of Queensland Government's Community Active Partnership Program. A three year program delivered by Logan Together across the city of Logan, with an aim to increase the physical literacy of children aged 0-8 years old.

It became abundantly clear that three years was not enough time to ensure maximum effort and sustainability for this program. To respond to the need, AIP was established in March 2021 with a refined focus to reduce the decline of play in childhood whilst creating a local authority to represent children. AIP is aligned with the Logan Together movement, with the shared vision to influence population-scaled change for children, that is replicable and transferable to other cities.

The first major project for AIP was the 2021 Childhood Summit, a 3-day event with several major goals including:

- Bring together the community to promote, celebrate and elevate the local efforts and expertise in supporting high quality play in Logan
- Give Logan children a platform to be heard on their issues of importance
- Consult with children on how to create child friendly neighbourhoods for play
- Grow the local knowledge and awareness of high-quality play provision and child voice support
- To inspire more high quality play in Logan
- Provide a high-quality free-play event for local children and families
- Co-design and co-create a 3 years play to grow play in Logan (2022 to 2025 Play Action Plans)

To ensure that AIP stayed true to the core mission of elevating the voice of children, a significant Logan "Child Voice on Play" consultation was undertaken prior to the 2021 Childhood Summit. AIP talked with 199 children from 31 Logan suburbs, aged between 2 to 13 years of age. The children's feedback created foundations for the framework used to develop the 2022 to 2025 Logan's Play Action Plans.

After a successful event, finalising the 2022 to 2025 Logan Play Action Plans led to several further significant events for the AIP including: forming the Children-In-Action (CIA) Logan Child Reference Group, developing the 2022 to 2025 Play Prospectus and securing a 2-year funding arrangement between AIP and Logan Communities for Children.

AIP is a newly established charity organisation, and our efforts moving forward are focused on establishing a city-wide solution to revitalise play, starting in Logan, and making this city the 'Most Playful in the World'

Thank you for your help
to establish foundations for
the Australian Institute of
Play



Our People

Board Directors/ Trustees

Name	Position	Starting Date	Background and Affiliation
Hyahno Moser	Chairperson	10/02/2021	Play advocate, Manager, Outdoor Ed, Parent
Jordan Hill	Treasurer	10/02/2021	Play advocate, Playworker, Logan resident
Amie Hankinson	Secretary	1/02/2022	Business owner, Early childhood educator, Logan resident, Parent
Penny Goodall	Director	10/02/2021	Community development, Logan resident, Grand Parent
Lukas Ritson	Director	10/02/2021	Early childhood educator, business owner, playground designer, Parent
Dr Gregor Mews	Director	10/02/2021	Landscape designer, University lecturer, Play advocate
Miranda Mason	Director	10/02/2021	Play advocate, Teacher, Guidance counsellor, Parent
Kristy Morgan	Director	1/06/2022	Early childhood educator, Manager, Forest school trainer, Logan resident, Parent
Areta Farrance	Director	1/06/2022	Early childhood educator, Bush kindy teacher, Logan resident, Parent



Angela Wright



Jordan Hill



Amie Hankinson



Penny Goodall



Lukas Ritson



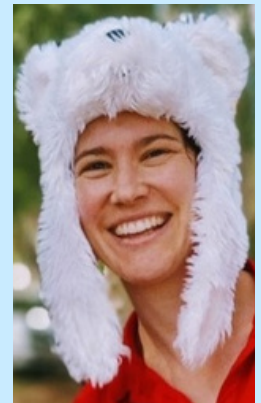
Brett Wright



Dr Greg Mews



Kristy Morgan



Suarubh Maylki

OUR PEOPLE

2021 to 2022 Partners



2021 to 2022 Sponsors



OUTSIDERS



2021 to 2022 In-Kind Contributors



Cities For Play



Australian Human Rights Commission

BBC STUDIOS



relinkconnect



AMNESTY INTERNATIONAL



WHAIFLOW



Growing Kind



From the AIP TEAM

Since March 2021, AIP has quickly solidified its place in the Logan community, covering enormous grounds inline with our core organisation and charitable objectives. The AIP Board's aim was to build the capacity of Logan residents, to lead a local movement to revitalise play for Logan children, and in doing so - address the inequities across child development in Logan.

This has only been possible due to the clever partnership and support of the Queensland Government, Logan Together's Community Active Partnership (CAP) Program and the AIP. However none of this would of been possible without the enormous buy-in from the Logan community.

Significant playful efforts towards this goal during this reporting period include:

- Consulting with, listening to and elevating **323 Logan children's voices on their play**
- **4 Child-Friendly Neighbourhood Workshops with children to understand childrens perspective on ht eplaces they play**
- **2021 Childhood Summit**
- Establishment of **Child In Action Logan child reference group**
- Co-design and co-creation of the **2022 to 2025 Logan Play Action Plans**
- **73 play events for over 9,300 Logan children, with over 6,000 supporting parents and carers in attendance.**
- Play People **Playful capacity building of 868 grown-ups from 179 Logan organisations**, to regularly support high quality play for over 28,500 Logan children (nearly 50% of Logan's population of children)
- **22 Logan Schools to increase high quality play provision** for the thousands of Logan children they serve
- Early Childhood - **73 Logan Early Childhood Services to increase the quality of play provision** for the thousands of Logan children
- Constructing **5 high quality, Loose Parts Play areas in Eagleby, Marsden, Berrinba and Woodridge**
- Child-designed/constructed and launched - **32 Eagleby children to design, construct, market and launch Queensland's first Community Backyard - Joomunije Land**
- Establishing **4 Neighbourhood Play Networks**. two in Eagleby, one in Kingston and one in Woodridge
- Establishing the **Logan Play Collective** and Logan Play People network
- Creating AIP website and social media pages
- Creating 2021 Childhood Summit website and Youtube channel to freely share recordings of Keynote speakers from the Summit



Of note, these efforts were independently evaluated by the University of Queensland School of Human movement, testing if AIP's play efforts increased physical literacy of Logan children and increased social connection and cohesion. The results concluded our efforts were effective and reported. This is significant as it augments the AIP approach, proving this is an evidence based means to support the healthy development of children and increase community agency and connections.

The AIP, now one year old, is still in its infancy. However it's already having a powerful effect across Logan. As the Logan community are experiencing, play is a powerful and joyful channel to support child wellbeing and healthy development as well as bring communities together, support cohesion, inclusion, self-governance and local agency. Play is helping to create new and positive local stories that act as a conduit for growing pride in families and pride in place. Play is reversing the impacts of stigma, social isolation and loneliness and healing the social-brokenness of our neighbourhoods. Thousands of hours of increased play in Logan is increasing the amount of smiles in Logan by children, parents, carers, teachers, principals, health care providers, community development workers, early childhood educators and professionals, services providers, police and even politicians.

The line in the sand-pit has been drawn when we co-created the 2022 to 2025 Logan Play Action Plans. We have a mission to make Logan the Most Playful City in the World. If the first 18 months are an indication of the years to come, I will draw great hope and inspiration that we can shift the equity dial for children through ensuring childhood in Logan is brimming with high quality child-led free play.

Now with secured funding until 2024 from Logan Communities for Children, the AIP can continue Logan's playful momentum, growing the movement, joy, fun, freedom and friendship inherent in play.

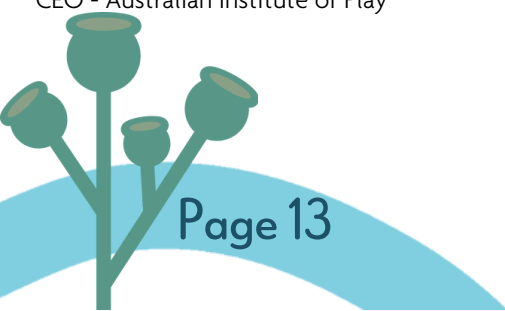
Hyahno Moser
CEO - Australian Institute of Play

Logan's Play Action Plan 2022 - 2025
TO MAKE LOGAN THE MOST PLAYFUL CITY IN THE WORLD
AIP AUSTRALIAN INSTITUTE OF PLAY

WE WILL...

KEY PLAY PRIORITY AREAS

1. Increase Intergenerational Play
2. Increase loose parts play
3. Increase social media on play
4. Increase community connections
5. Increase access to playgrounds & play spaces
6. Increase play education
7. Create more neighbourhood play networks
8. Create community playboxes
9. Co-design with children/child voice
10. Create free play events
11. Follow current research



Our Objectives and Activities

Charitable purposes

Object of the Australian Institute of Play

Our objectives are:

The Australian Institute of Play is established to be a charity. Our purpose is to **promote, enable and protect Australian children and their right to play**. The organisation aims to use play to build resilience and wellbeing for and with children across communities, and particularly those who are vulnerable and live in areas of disadvantage. Evidence demonstrates that **play is many things to children, including an intervention tool for health, wellbeing and agency**.

Under these terms, as a result of this charity:

- Australian children will be represented, in relation to their **human right to play as outlined in Article 31 of United Nations Convention on the Rights of the Children**
- **Increased opportunities for play** will be influenced and conditions for play augmented across the community.
- **Australian children will be consulted and their voices elevated in relation to play**, especially where **'play is not accessible'**.
- **Australian governments' and organisations' actions will be monitored** to ensure that they abide by obligations under the United Nations Convention on the Rights of the Children.
- The Australian public will be made aware of any government or organisational breaches of obligations under the two covenants set out above, through education campaigns, publications or any other legal means.

The Australian Institute of Play will **intervene on Australian children's sedentary activities** and advance Australian children's health by:

- **Providing play-related services** to intervene on children's physical inactivity addressing conditions that may result in related lifestyle diseases and developmental delays.
- **Creating conditions for community empowerment to support children to play** actively to achieve aforementioned health outcomes for communities.
- Supporting the health and wellbeing of children afforded by **daily and regular participation in play**.
- Celebrating and disseminating advice on children's physical development, physical literacy and physical health achieved through daily and regular play.
- **Advising on children, who suffer from, or who are at risk of suffering from, a lifestyle disease** as a result of declining participation in daily and regular play.
- Promoting play to **assist in breaking intergenerational cycles** where conditions have been unsafe and therefore not conducive to play.



OUR PLAYFUL OBJECTIVES & ACTIVITIES

Activities completed over the period Mar 2021 to July 2022:

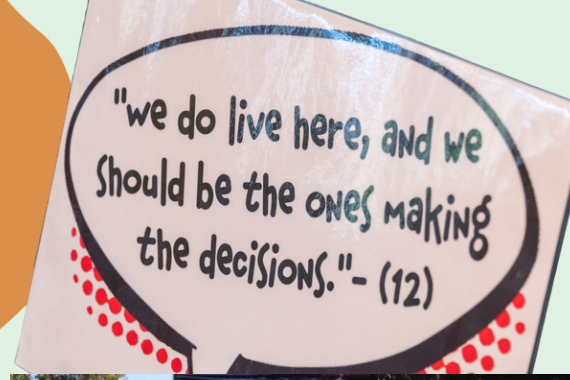
1. Logan Children's Voice and Play
2. 2021 Childhood Summit
3. 2022 to 2025 Logan Play Action Plans
4. Children In Action Logan Child reference Group
5. Logan Play Events
6. Neighbourhood Play Networks
7. High Quality Play Loose Parts Play Areas for Logan Children
8. Playful Collaboration - Logan Play Professional Development





323

Logan children consulted on their play



1. Logan Children's Voice and Play

Three hundred and twenty-three Logan children have had their voices regarding play in their neighbourhoods, listened to, recorded and elevated.

Child Voice consultation efforts so far:

- Four Child Friendly Neighbourhood Play - Child Voice Workshops. These workshops explored the perception of local children on the capacity of neighbourhoods to support their play. During these workshops children unpacked the amount of play they currently do and how much they would like to do, the barriers to this activity, and their solutions. Involving 36 children from Eagleby State School, 42 from Berrinba East State School, 14 from Kingston State School and 25 from Eagleby South State School.
- Mentoring 16 Childhood Summit Child Voice Keynote presenters to develop keynotes on issues important to them in their community.
- Logan Childhood Play Surveys; conducted at play events and on neighbourhood streets. Children were asked a consistent set of questions regarding their play. Their answers were analysed for themes, which AIP then used for advocacy.
- Children co-designed and co-created Queensland's first Community Backyard and Adventure Play-space - Joomunjie Land. AIP supported 32 Eagleby children to design, build, market, and launch a community backyard and adventure playground for local children.
- Established the Children In Action (CIA) - Logan child Reference Group, who act as a means for grown-ups to consult with children on issues impacting them. Currently made up of 9 Logan children, the CIA meet fortnightly.



Logan Children Told Us:

They need lots of play every day, multiple channels for play, they want adults around but not involved. Children are motivated by time with friends, fun, freedom and challenge.

Without access to play every day, children are lonely, isolated, sedentary, have negative perceptions of their community.



2. 2021 Childhood Summit

28 to 30 October 2021

During this event AIP coordinated:

- Celebration of many achievements of local support for high quality play in Logan
- Elevated Logan childrens' voice on play
- Grew Logan knowledge and skills on how to support play
- Demonstrated and role modelled high quality free play provision
- Co-designed 2022-2025 Logan Play Action Plans
- Delivered two Child Voice consultation workshops
- Created opportunity for delivery of play and child voice professional development workshops

More information...

- 224 delegates from 101 organisations attended the 2021 Childhood Summit
- 63 Family members of children took part
- 24 Logan playful success stories were celebrates
- 89 delegates took part in three days of workshops to co-desi the Logan Play Action Plans
- 161 families brought 363 children to play in the Loose Parts Play installation
- 50 children participated in two Child Voice on Play Workshops
- 10 play and Child Voice professional development workshops were delivered mostly by Logan play professionals
- Over \$71,000 of in-kind support was provided



3. 2022 to 2025

Logan Play Action Plans Story

AIP coordinated and led a 6 month process to develop a cohesive plan for increasing play for Logan Children. The steps taken included:



Step 1: Co-designed and co-created with community

Step 2: Founded on 199 Logan Children's Voices from 31 Logan suburbs

Step 3: DRAFT PLAN created over 3 days of workshops in October 2021
(89 Grown-Ups who support Logan Children participated)

Step 4: Draft plans tested and approved by Logan Children Reference Group

Step 5: Given back to Logan Community to begin the work

Step 8: AIP have founded a 3 year strategy on the 2022 - 2025 LPAP's

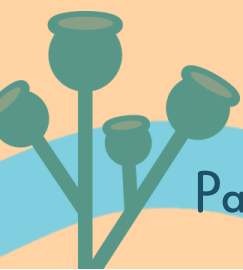
Logan's Play Action Plan 2022 - 2025

TO MAKE LOGAN THE MOST PLAYFUL CITY IN THE WORLD

WE WILL...

KEY PLAY PRIORITY AREAS

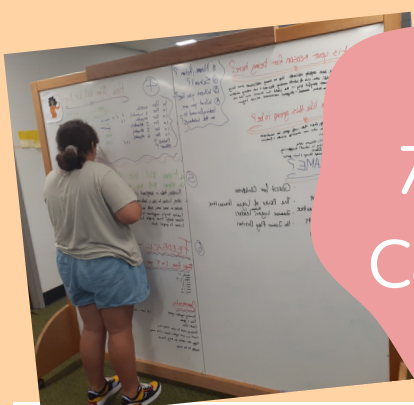
1. Increase Intergenerational Play
2. Increase loose parts play
3. Increase social media on play
4. Increase community connections
5. Increase access to playgrounds & play spaces
6. Increase play education
7. Create more neighbourhood play networks
8. Create community playboxes
9. Co-design with children/child voice
10. Create free play events
11. Follow current research



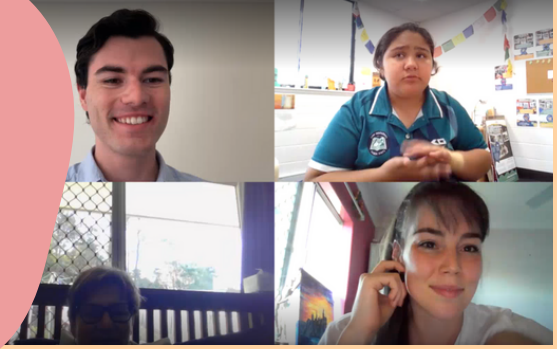
4. Children In Action (CIA) Logan Child Reference Group

Formed in December 2021, immediately after the Childhood Summit. Nine of the child keynote speakers from the Childhood Summit were eager to form a group of children committed to continuing their campaigns for justice, recognition and inclusion.

The children told us they wanted to form a group which would create a safe space where Logan children can have a say in what's happening...



9 Children,
7 Months & 10 Meetings
Community Representation
and Consultation



Logan Child Reference Group- Decision Making Process

Name: _____ Date: _____ Idea: _____

Feedback or Thoughts?

1. What do you think about this idea? _____

2. Do you think it reflects the best interests of you as a child living in Logan? Please circle YES or NO? _____ Any thoughts? _____

3. Would you be happy if it happened? Please circle YES or NO? _____ Any thoughts? _____

4. How would you rate it on the scale below? Please circle - 1 - 2 - 3 - 4 - 5 - 6 _____

5. What feedback do you have? _____



- 1 **This is very insightful!**
This is **GREAT**, very interesting and completely for the children
- 2 **This is courageous!**
This is **GOOD**. It would be interesting and seems like it is designed for children
- 3 **This is a cute!**
This is **OK** and a little interesting to children, but it feels like adults are wanting us children to get/learn something as well
- 4 **This has its limits**
The **IS** interesting, but the grown-ups have taken over
- 5 **Are you kidding! This is not for children!**
This **IS NOT** interesting, and the grown-ups have taken over
- 6 **This is silly!**
This **IS NOT AT ALL** interesting for children, grown-ups have completely taken over

... In their first meeting, CIA members identified areas of priorities for them. Priorities included protecting trees, improving playgrounds for all children, to make Logan the most Play-full city in the world and to increase mental and physical connections across Logan.

The children have been keen to action these ideas by starting petitions, writing to their principals, representing the CIA at Play Action Plan working groups and even attending meetings with local Council members to give feedback on park construction plans.

These powerful children have no intent to stop soon - they have a right to be heard and they have a lot to say!

At their request, AIP representatives will continue to be at their fortnightly meetings. In the future, CIA are keen to expand their members and find more opportunities to be involved in the communities they live in.

5. Logan Play Events

73 Logan Play events were delivered for the community, creating play opportunities for over 9,300 Logan children. These events:

- Role modelled high quality child-led play provision to over 6,000 Logan parents and carers
- Built Logan's play-capital through partnering with over 40 Logan child service providers
- Grew Logan's Play Culture



73 Pop-Up Play Events Over 9,300 Children, Partnered with 40 Logan Service Providers

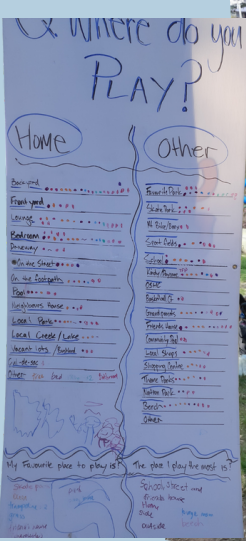
2 Days of Play @ The Family Place - Woodridge

Hosted by The Family Place, this was a collaborative play event coordinated by the AIP. Forty-five community partners joined together to deliver a two day high quality child-led play event for 191 Children who brought 118 Grown-ups. A wide range of free play activities were organised for local children. The second day was an all-abilities specific day, focused on increasing awareness of catering to the diverse needs of children and their play. Water, mud, slime and bubbles were a highlight.

This event was the catalyst for The Family Place offering a weekly Messy Play session for local children. Average regular attendance is 75 Logan children.

Under 8's week @ Meakin Park - Slacks Creek

Another collaborative play event coordinated by the AIP. Twenty-three community partners joined together to deliver a two day high quality child-led play event for 667 Logan children who brought 481 Grown-ups. This event was hugely successful offering many active free play opportunities, connecting Logan families with Meakin Park as well as incorporating a child voice consultation process.



THANK YOU



Wearthy



5. Pop-up Playship Outreach

Thank you to our amazing play friend and partner, Wearthy for donating the use of the Playship. With this joy-filled trailer, the AIP have been activating so much creative and collaborative play, as well as inspiring amazing Loose Parts Play across Logan, for thousands of Logan children.

- Crestmead Early Learning Centre
- 2 Days of Play at The Family Place
- Gunya Meta Play days
- Waterford West ELC
- Jarjums Matter at The Family Place
- Woodridge North Community hub
- Woodridge Neighbourhood Play Celebration
- Loganholme State School Under 8's Day
- Beenleigh NAIDOC Event 2022
- Daisy Hill State School Jarjums Matter
- Logan Eco Action Festival (LEAF)
- Shailer Park State School NAIDOC 2022



*"Although this was bit of a shady area,
we are the best street now. In the world."*

Child from the Woodridge Neighbourhood
Play Network 2021



*"He had a lot of trouble previously making friends, he had quite a
lot of anxiety, but now it's easy to make friends playing together."*

Marissa (Parent at Curious Communities) 2022



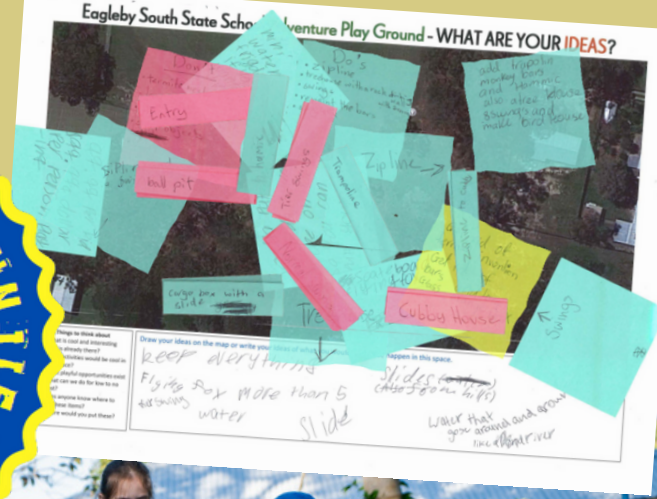
*"Many of the responses (from the Childhood Summit
attendees) highlighted the importance of listening to the
child's voice and the impact they can have on society, one of
the attendees shared the sentiment "It was such a powerful
reminder to really listen to (the children's) voices"."*

UQ Evaluation Report 2022

5. Logan Play Events

Queensland's
First Community
Backyard

Joomunije Land Launch



Joomunije Land is two acres of previously out-of-bounds area at Eagleby South State School. It was gifted to the **32 Student Leaders of the school** to design, construct and launch of the local community to play. Joomunije Land was designed and constructed by local Eagleby children over six months.

LAUNCH TIME....

During the launch of Joomunije Land, all 494 Eagleby South State School students were able to test the new adventure play space. The launch consisted of two, 2 hours play sessions per day across two days - a total of 8 hours of play!

The 494 Eagleby children who tested the play space on 22 and 23 June, gave the play space a rating off the charts, averaging 10 out of 5 stars.

508 local children came to the launch of Joomunije Land on 24 and 25 June.



The Student Leaders formed **Marketing and Maintenance Team**, and set about the tasks to construct and launch Joomunije Land.

Eagleby South State School is highly invested in play since starting their playful journey 18 months ago. They have reported many positive impacts of play which are transforming their students, teachers educational experience as well as the overall school culture.





JOOMUNJIE LAND

An imaginative play space, here children just play, be creative and have fun



Designed to be open in times when local children need it, the AIP supported Joomunjie Land to be open for five play free community play sessions over the winter school holiday. During these play sessions 398 local children came to play, with 201 grown-ups in support.

WE NEED YOUR HELP!

AIP is currently seeking funding to keep Joomunjie Land open to local children in peak play times - after school, on weekends and during school holidays.



5. Logan Play Events 10 Weeks of Play Program



Curious Communities
Berrinba East State School
165 Bardon Road, Berrinba Qld 4117

COMMUNITY PLAY EVENTS
All Ages Welcome
FREE!

Date	Session & Theme	Time
Sat 28 May	Session 1: Inanay	1:30pm - 3:30pm
Wed 01 Jun	Session 2: Wheels on the Bus	3:00pm - 4:30pm
Wed 08 Jun	Session 3: Old McDonald	3:00pm - 4:30pm
Sat 18 Jun	Session 4: Heads, Shoulders, Knees & Toes	1:30pm - 3:30pm
Wed 22 Jun	Session 5: Twinkle Twinkle	3:00pm - 4:30pm
Wed 29 Jun	Session 6: Incy Wincy Spider	9:30am - 11:30am
Wed 06 Jul	Session 7: I'm a Little Teapot	9:30am - 11:30am
Wed 13 Jul	Session 8: Kookaburra	3:00pm - 4:30pm
Wed 20 Jul	Session 9: Once I caught a Fish	3:00pm - 4:30pm
Sat 30 Jul	Session 10: If You Are Happy & You Know It	1:30pm - 3:30pm

Story Time
Sensory Play
Loose Parts Play

SCAN ME

Booking Essential: curiousme.com.au/communityprogram

Berrinba East State School took the lead and partnered with Logan City Libraries First 5 Forever program, Australian Institute of Play, Logan Together and Curious Me to deliver Logan's first 10 Week Play Program. By staffing the space with two Playworkers for two hour play session weekly, for 10 weeks. Every Saturday Berrinba East State School was able to open their nature play area and Loose Parts Play zone to local community. For 10 weeks Playworkers and school staff worked together and engaged families to support their children to participate in active and social play. In total, 724 children brought 630 grown-ups to play.

Since this initial implementation, this effective play program has been replicated three times. At the Family Place in Woodridge, Eagleby South State School and again at Berrinba East State School. The popularity of the program was sustained.



"For a weekend we didn't used to really do much at all... so that compared to 2 hours of play, play, play, there is a big difference." - Chelsea (Parent)

"Here they get to use their body outside, they get to build muscle, that's something I find a lot of kids lack... They get to be away from technology which is a big thing that's stopping this sort of play." - Danika (Parent)

"We are recent migrants so this is a great event for my children to find their way to be a part of the local community." - Hoi Ting Sun (Parent)

"She's building more confidence being around other kids and speaking up, getting in, and having a go, because she can be a bit shy sometimes."
Tony (Parent)



Evaluation

- Curious Communities @ **Berrinba East State School** - 11 September to 13 November 2021
Participation 724 children and 630 grown-ups
- Curious Communities @ **The Family Place, Woodridge** - 28 March to 28 May 2022
Participation 684 children and 592 grown-ups
- Curious Communities @ **Eagleby South State School** - 4 April to 26 June 2022
Participation 429 children and 323 grown-ups
- Curious Communities @ **Berrinba East State School** - 25 May to 20 July 2022
Participation 679 children & 315 grown-ups

Evaluated independently by the University of QLD.

Feedback demonstrated a strong community need for future programs like this. Evaluation of the program produced strong results that this initiative is a strong source of physical activity, social connection, and social skill development.

91% Increased Physical Activity

74% Increased Social Connection

71% Increased Language



6. Neighbourhood Play Networks

Networks

Four Neighbourhood Play Network processes have been completed, two in Eagleby, one in Woodridge and one in Kingston.

- Each NPN has 6 months support
- 110 local children and 75 local grown-ups participated
- Three NPN still progressing
- Success is dependent on many variables including street design such as, amount of thoroughfare traffic, willingness to be led by the children's abilities and needs for play, prioritising play sessions, and consistency of play sessions.

Benefits for children involved:

- Children thrive in all areas of health and wellbeing
- Neighbourhood play benefits are transferred to other areas of children's lives such as school, friends and extra-curricular activities
- Stigma is eroded and neighbourhood pride flourished
- Increased local agency and feelings of empowerment
- Reduced sedentary behaviour
- Increased social connections
- Reduced residency turn-over and builds stability
- Increased local trust
- Reduced power bills

Eagleby NPN

This was the first Logan Neighbourhood Play Network. It started strong with 20 local children, supported by 18 parents and carers. The neighbours were excited about creating something special for their children, however the group become challenged by inconsistent play sessions, competing priorities and traffic concerns.

The local children built friendship, got to know their neighbourhood play spaces, and grew a value of local play.

Unfortunately, this NPN has dissolved due to significant traumatic event happening in their community, making all neighbours revert to distrust and isolation. The local children still get to connect but only under close adult supervision. The children and families still love to visit the wild play spaces.



NEIGHBOURHOOD PLAY NETWORK play planning & you!

- 1. Street Play Day**
CONGRATULATIONS! You've been part of the first play day of the Yolla Street Play Network! So what's next...?
- 2. Local Play Plan!**
The Neighbourhood Play Network is an exciting new project that you're leading! In the next 4 months we want to work together to design a way forward with your neighbourhood play days. We want to do that via workshops designed and driven by you!
- 3. Neighbourhood Workshops**
Together your play network will decide:
 - When to hold the workshops
 - How many to have
 We hope these might become regular occurrences over the next six months BUT how many & entirely up to you!
- 4. What are the workshops about?**
The workshops will be informal chances for you to:
 - Reflect on your play day - the good, the bad, the ugly
 - Plan how play might look for Yolla St Play ongoing
- 5. Our Play Future**
This is the BIG picture stuff! Together we will discuss:
 - Long term needs of your play network
 - Your ideas about how to make sure your street keeps playing
 - And share our success with communities around us so they can start to PLAY too!

Join the Street Neighbourhood Play Facebook Group to keep up to date with play days & workshop dates

For more information contact:
HYAHNO MOSER
Australian Institute of Play
(m) 0403 458 871
(e) hyahno@australianinstituteofplay.org

Queensland Government | Logan together



6. Neighbourhood Play Networks

Kingston NPN

Launched Saturday 28 August, 2021 with a street closure party in a cul-de-sac, Kingston Neighbourhood Play met one local family with five children. The Kingston NPN trialed moving the play street to a different local street which was less of a thoroughfare. This street has 8 children between the ages of 9 months to 11 years playing regularly on it for about four sessions. The children on the street quickly began to recognise an invite to play and often commented that they would be doing nothing if we weren't there to play with. The connections between the children grew and the confidence of the quieter children increased each session.

Unfortunately, these sessions were frequently impacted by COVID. The play sessions became irregular, this precious momentum was lost.



Eagleby NPN No.2

During the first Eagleby Play Network, another passionate play-minded individual was identified during a trip to the local park.

A Mum of five and long term Eagleby resident, was extremely invested in making her neighbourhood more playful for her children and other local children. Bec felt isolated during the snap lockdowns and was looking for more ways to connect her children with new play friends. Her three youngest children are 8, 5 and 5 years old, with her twins needing increased attention and care for special needs.

Starting 19 March, 2022 with 12 children and 11 adults attending the Saturday play street. Bec was a regular and committed play champion (or Imagination Facilitator - her preferred title), hosting weekly play opportunities for the children in her neighbourhood.

These weekly sessions attracted approximately 8 children each session, with many familiar faces returning each week.



6. Neighbourhood Play Networks

Woodridge NPN

After six months of support, Woodridge NPN transformed into a neighbourhood of children connected and playing every day. A core group of 15 children played daily, and over the six months 23 parents of 53 children from the area have come out to play. The ages of the children ranged from 2 to 16, with the average being 11.5 years old.

Children self-direct their play and have been observed constantly practicing social skills, being active, practicing and mastering many fundamental movement skills associated with physical literacy. The children largely choose to play volleyball, basketball, handball, ride bikes, scooters and skateboards. They also self-organised running races, play hide and seek, and do karaoke performances for each other. All on their own terms, developing strong intrinsic value for where they live.



"This affects my school stuff. I use to be just sitting in class not doing anything for H.P.E. I would just sit in class start talking to my friends but now that you've come now I'm more physically active during H.P.E when ever they go out to play volley ball, soccer, basketball I would go out with them." - Boize (12)



"Before I was a little bit chubby. (So you think you've lost weight?) Yes, due to this. I have the confidence at school knowing that I get my school work done, finish it I can get home and I can go play with those amazing, grateful friends but it stopped me from doing my homework soo I have to do homework on Sunday night." - Indy (9)



Significant mental and physical health protective factors have been witnessed and expressed by both the parents and the children. Constant language practice and development, negotiating skills, self-regulation of emotions - as play is such a strong motivator for children to work through emotions.

The children have sleep more at night-time, spend less time indoors with screens and are choosing outdoor active play. The have developed resilience, problem solving skills and social supports as they work out rules of games, create new games, as well as shape and build friendships. All remnants of social isolation and loneliness the children said they felt have been eroded by the presence of their neighbourhood play network.



WOW

Further to this, community pride has been fostered to a level that is overruling pre-existing stigma. Evidenced in this comment, where Indie (9) acknowledged the stigma embedded in her community and then overrules it with a powerful statement based on her experiences of her neighbourhood now.

“Come to Our Street, it is the best street in the world. It might be a shady area but it the best street ever.” Indie (9)

The Woodridge Neighbourhood Play Network is now a self-sustaining entity. Driven intrinsically by the children, supported by parents who now make this a priority for their families. If sustained, the life trajectory of these children will be positively altered.



“I think it really effects behaviour not playing out in the neighbourhood) because if youré lonely at home you might not have a good reputation when you get older you might be lonely, bored and not talk to many people. It’s better to know people when you’re younger so that way you’re easier to talk with when you get older.” - Alice (10)



“Don’t sit on technology all day on the weekend or after school. Rest your eyes and come out and be active and healthy. You need friends not to be lonely. If you lonely, you won’t eat, if you don’t eat you die. When your lonely you just sit in your room crying and on technology.” - Indie (9)

My neighbourhood is... “More comfortable because I know everyone. I know if something bad happens I have people who can actually help me.” - Alice (10)

7. High Quality Play - Loose Parts Play Areas for Logan Children

These spaces are usually filled with items that are moveable, combinable and that have no predetermined narrative. Here, adult intervention is minimal as these spaces are dedicated to support child-led free play. Self direction and agency are central to these spaces! Children are supported to create the rules for the space, and adults are not allowed to clear up or clean the space. This allows children to develop strong bonds, ownership and value for what the space offers them, as an outlet for expression.

Over the past 12 months, five Loose Parts play spaces have been constructed in Logan. One space within a community centre and four within school grounds. Each with its own unique play-offering for Logan children.

These space support daily access to high quality play for 1,724 Logan children. Located in Woodridge, Marsden, Berrinba and Eagleby.

This school has been instrumental to increasing high quality play provision in Logan. Principal Steve Kanowski has been leading Loose Parts Play in Logan education settings since the start of 2020.

Many schools in and outside of Logan have been inspired by Principal Kanowski's leadership in the play provision domain and phenomenal results for the children at Berrinba East. Steve has created many high quality play spaces in his school, including a nature play area, a repurposed tennis court turned into a Loose Parts Play space, an additional Loose Parts Play area for the younger cohort, a bike-riding trail, vegetable garden, bug hotel, chicken pen and a recently added pallet city and construction zone - where children can experiment with tools.

As a result of these efforts, BESS has seen a significant shift in their school culture. A 65% reduction in suspensions, halving of behaviour related incidents, increased school attendance and increased academic results. Children have been noted as happier, more creative and more resilience. This has been proven through a study based on the school, which revealed that children feel like they have more friends at school and are choosing to use violence or aggressive behaviour less.

Principal Kanowski continues to increase the opportunities for play within his school, with implementation of play-based curriculum activities, increased play-time, as well as opening the Loose Parts Play spaces to the community outside of school time. BESS was first to deliver the community based 10 Weeks of Play program in partnership with Curious Me, First 5 Forever, Logan Together and AIP.



7. High Quality Play Loose Parts Play Areas for Logan Children

The Family Place Loose Parts Play - The Tinker Shed

In 2021, AIP assisted staff at The Family Place to design and construct a Loose Parts Play area. An average of 140 children regularly play in this space. The Tinker Shed area was officially launched as part of the Curious Communities play sessions and is now an integral part of the the Family Place community, providing endless play opportunities for children and their families. Family Place staff have also participated in the multiple play professional development opportunities.



Burrowes State School Loose Parts Play Area

Starting in early 2022, AIP assisted teaching Staff to design and construct a Loose Parts Play area, as well as develop a comprehensive Loose Parts Play handbook, that covers risk/benefit assessments, processes and maintenance. Furthermore this school has received four sets of play-related professional development for their staff, including Benefits of Play, Playworker training, Embedding Outdoor Learning and Playing in Nature to support staff with increasing play quality for their students. An average of 100 children play in this space per day.



7. High Quality Play Loose Parts Play Areas for Logan Children

CASE STUDY Eagleby South State School Loose Parts Play Journey

Developed at the beginning of 2021, this Loose Parts Play area sits right in the centre of the school. AIP supported Eagleby South Staff to construct and fill the play space. AIP further supported staff with launching the space and introducing Loose Parts Play to the students. Since then, this play area has become the most popular play space in the school, with at least 70 children playing in the space during every break.

After 12 months of operation, Eagleby South State School was audited by the Department of Education. The results demonstrated that increasing high quality play provision is having a profound impact on reducing incidents when comparing data from 2019 with 2021. Behaviour related incidents have reduced by 50% (1494 in 2019, 736 in 2021), detentions have reduced by 90% (522 in 2019, 27 in 2021) and suspensions have reduced by 65%.

Principal Andrew Barnes is present in the Loose Parts Play Paradise every break. The Principal says, "By investing time in being in this play space, I now, most day have no children sent to my office after breaks. Before this I had a line of children waiting outside my office after break time".

Principal Andrew Barnes also believes that the increase of high quality play provision is having a huge impact on the whole school culture, resulting in the school becoming a more positive and happy experience for students and teachers alike. These results have motivated the school to further increase high quality play opportunities. Student Leadership Council were engaged to design, construct, launch and manage a second Loose Parts Play area, which is much larger and able to cater for hundreds more children.



Eagleby South State School – Joomunjie Land Adventure Play Space & Community Backyard

30 March 2022 AIP began supporting 32 student leaders from Eagleby South State School. The aim was to codesign and co-create a large loose parts play space that would cater for hundreds of children at one time. Principal Andrew Barnes had given the student leaders permission to redesign, shape and open an area of the school that had previously been out-of-bounds.

7. High Quality Play Loose Parts Play Areas for Logan Children

CASE STUDY

Eagleby South State School's Loose Parts Play Journey...

For the duration of four months, the student leaders gave up their play-time to design this space. Working together they decided what the space should be used for, what to call it and how it should operate. The students led a democratic process with the entire school to name the space and from the ten name finalists, "Joomunje Land" received 106 votes out of 494 students.

While unpacking the benefits of play for children, the student leaders decided that the space should be a community space, open to Eagleby children after school, on weekends and during school holidays. Joomunje Land is now referred to as a Community Backyard to convey the fact that all local children are welcome to come and play.

The student leaders developed the conditions of entry to protect the play space, and make children feel safe. The group split into a Marketing Team and Maintenance Team. The marketing team designed signs, posters, fliers, and social media posts to promote the launch of the event 24 and 25 June. They distributed marketing materials around their community. They also developed a 'Loose Parts Play Wish List', which was distributed to all parents from the school. Adults were keen to contribute towards filling the Loose Parts Play area. The maintenance team met weekly to clean up the site, move and set out Loose Parts Play items, and oversee major works to ensure their designs were being adhered to.

Hundreds of parents and community members attended launch event and opening ceremony. Student leaders ran the opening ceremony, conducting acknowledgement of the country, giving presentation talks to the audience on why they built this play space and their hopes and dreams for Joomunje Land, for local children.

The Student leaders coordinated with ESSS staff, a two-day test session of the play space with all students, to ensure play items and areas were fit for purpose. 494 school students came to play over the two days. On average Joomunje Land reviews received 5 out of 5, with many children giving the adventure playground 10 out five.

During the launch on June 24th and 25th, 508 children and 290 grown-ups came to play, most from the immediate community.

Designed to be open in times when local children need it, the AIP supported Joomunje Land to be open for 5 play free community play sessions over the winter school holiday. During these play sessions 398 local children came to play, with 201 grown-ups in support.

AIP is currently seeking funding to keep Joomunje Land open to the local children in peak play times; after school, on weekends and during school holidays.



The Eagleby South Student leaders retained governance of this space and are now approving requests from the community to use Joomunje Land for various purposes. Including a festival, training and excursion location for other schools...

8. Playful Collaboration

Logan Play Professional Development

Over the past 18 months AIP, in partnership with Logan Together and the Queensland Government, have coordinated and funded 30 free play professional development opportunities for Logan service providers. Over this time, 886 Logan child professionals and carers, from 179 Logan child service organisations have increased their knowledge and skills on high quality play provision. The professionals and carers regularly support over 28,300 Logan children (almost 50% of Logan children).

The aim of Playful Collaboration and Professional Development is to increase the knowledge and skills of Logan service providers, parents and carers who support Logan children and their play. With the objective of increasing Logan children's conditions and opportunities to play every day, in spaces they regularly access. This approach is selected for its sustainability with the assumption that empowering Logan child care-givers with relevant play knowledge and skills, results in growing local agency, pride and play capacity.

Among Logan's growing Play-Army includes:

- 63 Parents
- 21 Schools
- 81 Early Childhood Services
- 15 Community service providers
- 14 Community development workers
- 12 Logan community hubs
- 5 Sport and recreation providers
- 3 First Nations Services



Professional development opportunities were subcontracted to specific experts within their fields of excellence. Including:

- Playworker training, delivered by The Outsiders Play Advocates
- Learning in Nature, Outdoor Play Training, delivered by Nature Play QLD
- Embedding Outdoor Learning, Primary Teacher Training, delivered by Nature Play QLD
- Play and Physical Literacy Training, delivered by Nature Play QLD
- Creating Playful Communities, delivered by Urban Synergies
- Child Friendly Neighbourhoods, delivered by Cities for Play
- Listening to Children, delivered by University of Melbourne
- Children's Right to Play, delivered Amnesty International



Additional play professional training opportunities provided was a chance to celebrate the existing knowledge and skills within the Logan community, including:

- Listening to Children, Child Voice, delivered by Rosie's Early Learning
- Talking Circle - Child Voice Training; delivered by We Belong FDC
- Play Provocations; delivered by Curious Me
- Staying Playful; delivered by Queensland Youth Parliament
- Neighbourhood Play Networks; delivered by Australian Institute of Play
- Trad Games; delivered by Gunya Meta



Rosie's Early Learning
An exploration for the new generation



Moving Forward

Since the inception of AIP, Logan has become a whole lot more playful! Nearly half of Logan's child population has been represented and/or involved through the Four Strategic Pillars which guide our work (Child's Voice, Play-based Strategies, Play Capacity Building and Playful Research).

Our energy for the next year will be focused on involving more children, as we continue the momentum of the current work which we are undertaking.

We are deeply invested in a place making approach and will continue to deeply engage within the communities we are present in. We will maintain a community focus as we heed the advice of local children, families and community members.

Let's make Logan the most Playful city in the world!



Moving Forward

Our reach table

Making Logan the Most Playful City in the World

	What the AIP will deliver with the Logan Community	Strategic Play Pillars	Logans Play Action Plan Priority Areas	No. Kids per year	No. Adults per year	Total Kids 2022 - 25	Total Adults 2022-25
Voice & Advocacy	Play Advocacy and Marketing	1, 2, 3, 4	1 - 11	-	-	-	-
	Child friendly neighbourhood workshops	1, 2, 4	1,2,3,4,7,8,9,11	60	8	180	24
	Child Voice Summit	1, 2, 3, 4	1-9, 11	72	246	216	738
	Logan Children Reference Group	1, 2, 3, 4	1,2,3,4,7,8,11	30	60	90	180
Play based Strategies	Neighbourhood Play Networks per year	1, 2, 3, 4	1 - 11	80	40	320	120
	Play time – 10 week - weekend or after school play sessions	1, 2, 3, 4	1-9, 11	2,400	7,200	7,200	21,600
	2x 2 Days of Play	2, 3	1,2,3,4,5,6,7,8,11	1,600	3,360	4,800	10,080
	Pop-up play sessions	2, 3	1,2,3,4,5,6,7,8,11	640	1,280	2,520	3,740
Capacity Building for Play	Neighbourhood Play Network Manual	1, 2, 3	1 - 11	80	40	320	120
	Bespoke Play Action Plans e.g., schools, community hubs, early learning centres, housing developments	1,2,3,4	1,2,3,4,6,7,8,11	1,600	100	4,200	200
	Playworker training	2,3,4	1,3,4,6,7,8,9,10,11	8,800	200	26,400	600
	Nature Play QLD - Outdoor Play training	2,3,4	1,3,4,6,7,8,11	1,200	60	3,600	180
	Nature Play QLD - Outdoor Play training	2,3,4	1,3,4,6,7,8,11	2,640	60	7,920	180
Physical Literacy Workshops	2,3,4	1,3,4,6,7,8,9,11	1,050	70	3,150	210	

Over the next 3 years
our Play Action Plan
will include....

60,916 Children

31,972 Adults

Education and Play

a letter of support from Andrew Barnes

Principal at Eagleby South State School

In the current educational terrain, an unfortunate shallow, reductive technicity predominates. Evidence in the form of quantitative data, must continually be furnished, (concocted) or replenished if educators are to justify just about anything that they do.

Careers are made – many books are sold - on the narrow triumphs of the increased speed and distance of the thing we now describe as learning (instead of the far richer project Education). But in all of this, the completely rational question still hopefully arises: ‘Are children thriving and doing well?’ Are they being educated in the deeper, more wonderful, older sense? Commercial wellbeing programs have certainly blossomed at the bottom of the educational cliff; but Play and Play alone signals the needed return to the rewilded world where a child can come into being as a person, experimenting with a dangerous unknown reality so as to be ready when it really bites and matters. Resilience programs should just step aside for genuine Play. And Education needs Play just as much as all children clearly do.

We at ESSS certainly felt the emergency at our place. Behaviour incidents were becoming completely unmanageable at playtime and in the playground. Hyahno rocked up one day after lunch when I was a bit dejected and he alerted me to the available resources. He articulated beautifully the serious, importance of play. We were soon blessed with a supportive throng of Playworkers who sensed our genuine interest. Good training gave boldness and confidence. We also sensed local community support as we took teachers (owning utes) into the community to collect objects for our Loose Parts Paradise. Older folks, in industry knew far better than we did that children need to play and they freely gave us their tyres, pallets, cable reels because they genuinely ..knew it mattered.

Little did we know that the data would eventually strongly endorse this work. Violence and aggression reduced. Playground ‘incidents’ almost evaporated. Parents reported that their children were building strange, creative things in their backyards. Those staff on duty in the playground reported increased happiness (They said we are no longer on military, preventative, duty...).

ACKNOWLEDGMENTS & THANK YOU

The Australian Institute of Play Directors would like to extend a sincere thank-you to all donors, funders, volunteers and members for their support during the first year of operation for the Australian Institute of Play.

Grants and funding

- Salvation Army - Logan Communities for Children
- Logan Together
- Queensland State Government

Sponsors & In-Kind Support

- Wearthly
- Rosie's Early Learning
- Amnesty International
- Berrinba East SS
- Eagleby South State School
- BBC & Bluey
- Cities for Play
- Australian Children's Commission
- Mums n' Bubs Logan
- Kingston East Neighbourhood Centre
- Gunya Meta
- The Outsiders
- Curious Me
- Nature Play QLD
- Queensland Youth Parliament – YMCA

Volunteers

- Ellen Ferris
- Angela Wright
- Luisa Thorburn
- Kerry Dearness
- Morgan Lee
- Play People
- Playworker volunteers from many OSHC

AIP Members

- Hyahno Moser
- Jordan Hill
- Penelope Goodall
- Lukas Ritson
- Ellen Ferris
- Carrie Rose
- Miranda Mason
- Amie-Jane Hankinson
- Areta Farrance
- Kristy Morgan
- Siobhan Kennedy-Costantini
- Michelle Christensen
- Curious Me (Angie Casella)
- Angela Wright
- Angela TuiSamoa
- Michelle Vecchio
- Todd Ada
- Angus Gorrie
- Saurbh Malviya
- Jhanvi Patel
- Isaih Tueta
- Emma Massey
- Lucy Ada
- Todd Ada
- Brett Wright



Local Play, Every Day

City + Play = A place for all
What happens when a city adopts a play plan?

CONTACT US

4/13 Logandowns Dr
Meadowbrook 4131 QLD
www.australianinstituteofplay.org

0403 458 871
hello@australianinstituteofplay.org